

A white Beneteau Oceanis 46.1 sailboat is shown from a side-on perspective, floating on clear turquoise water. The boat has a white hull with a red stripe and the name 'BENETEAU' and '46.1' visible on the transom. The mast is white and has a white cover over the cockpit area. In the background, there is a steep, rocky cliff with some sparse vegetation. A small, square tower is visible on the top of the cliff in the distance. The sky is a clear, light blue.

Eonia- Beneteau Oceanis 46.1

BENETEAU OCEANIS 46.1

Eonia

L'Oceanis 46.1 entra nella dimensione dei grandi yacht e offre un delicato equilibrio tra eleganza, volumi disponibili e performance. La carena a redan conferisce un ottimo comportamento marino e libera eccezionali volumi interni. Numerosi dispositivi funzionali e personalizzabili garantiscono una navigazione semplice ed estremamente confortevole.

Il grande pozzetto dell'Oceanis 46.1 può accogliere attorno al grande tavolo fino a 8 persone. I due prendisole posizionati ai lati della discesa offrono schienali reclinabili e porta bicchieri e possono essere facilmente spostati sulla piattaforma di prua della barca. All'interno, i grandi oblò di murata diffondono una luce chiara e naturale fino al centro della barca, permettendo di godere appieno l'eleganza degli interni firmati Nauta Design.

The Oceanis 46.1 boasts all the features of a large cruising yacht, with a rare balance between elegance, usable space and performance. Her stepped hull opens up an incredible amount of space inside and yet her seakeeping performance is still impressive. A large number of clever customizable fittings make her easy to sail and pleasantly comfortable.

The Oceanis 46.1 has a very spacious cockpit with space for 8 guests around a large table. There are two reclining sun loungers together with drinks holders on either side of the companionway. Inside, large hull portholes bring a considerable amount of natural light right into the centre of the boat, so that you can truly enjoy the elegant interiors by Nauta Design.



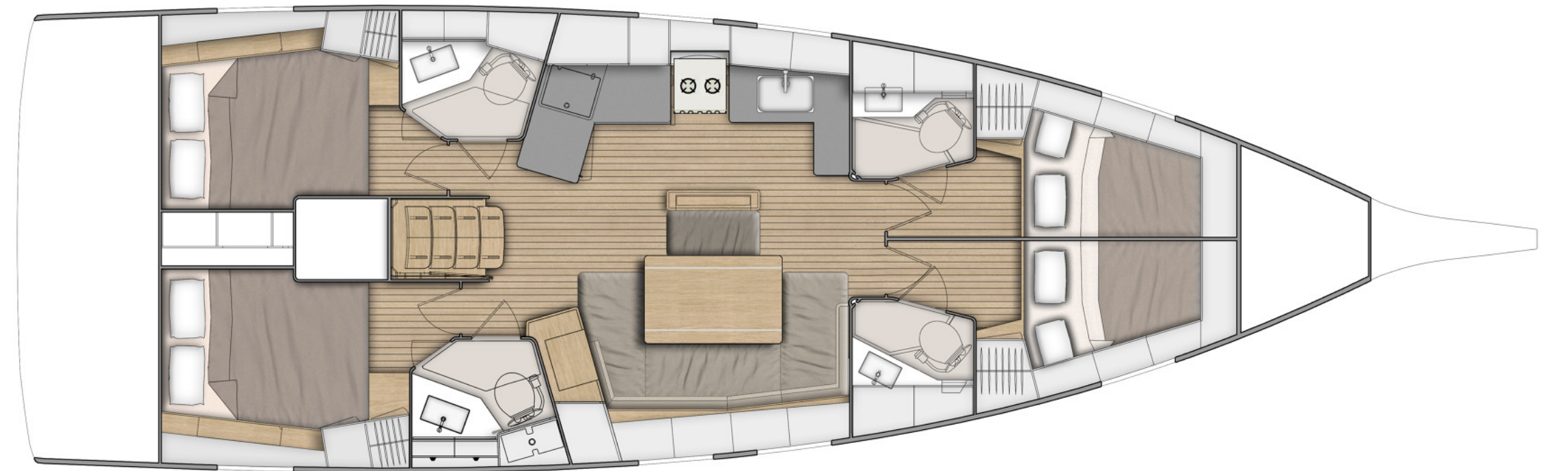


Specifiche *Specifications*

MODELLO	MODEL	Oceanis 46.1
ANNO	YEAR	2022
LUNGHEZZA FUORI TUTTO	LOA	14,60 m
PESCAGGIO MINIMO	MIN. DRAFT	2,35 m
CAPACITÀ ACQUA	WATER TANK	570 L
CAPACITÀ CARBURANTE	FUEL TANK	200 L
MOTORE	MOTOR	80 HP
CABINE	CABINS	4
WC	TOILETS	4 electric
N° OSPITI	N° OF GUESTS	8 + 2

EONIA

Configurazione *Layout*



EONIA

Equipaggiamento *Equipment*

- Frigoriferi (2)
 - Sail Drive
 - Inverter 2000 W
 - Elettronica B&G
 - Elica di prua
 - Avvolgifiocco
 - Fiocco autovirante
 - Randa avvolgibile
 - Winch elettrico
 - Teak in cockpit
 - Ventilatori in salone e cabine
 - Tendalino
 - Sprayhood
 - Macchina del caffè
 - Audio iPhone/iPod/USB
 - Cuscini in pozzetto
 - Catena 50 m
 - Tender 2,40 m
 - Fuoribordo 2.3 CV
- *Fridge (2)*
 - *Sail Drive*
 - *Inverter 2000 W*
 - *B&G Electronics*
 - *Bow Thruster*
 - *Roller Furling Foresail*
 - *Roller Furling Mainsail*
 - *Self tacking jib*
 - *Electric Winch*
 - *Teak in cockpit*
 - *Fans in salon and cabins*
 - *Bimini Top*
 - *Sprayhood*
 - *Coffee Machine*
 - *Audio iPhone/iPod/USB*
 - *Cockpit Cushions*
 - *Chain 50 m*







